

INTRODUCTION TO ANTENNA & RADIO WAVE PROPAGATION

ECE 516E – ANTENNA & RADIO WAVE PROPAGATION

Monday, 15 September 2025

ELC 516E SYLLABUS

Course Content:

Antenna theory: Electromagnetic fields and radiation theory; pattern synthesis, near and far field patterns and focused apertures. Properties of Antenna: Antenna Impedance, Radiation Resistance, Radiation Pattern, Beam area and beam efficiency, gain, directivity and Gain, radiation intensity, half power BW, polarization, antenna losses, antenna efficiency, effective aperture, effective length of antenna, effects of antenna height, antenna temperature, front to back ratio, antenna field zones. Antenna synthesis: Fourier transform method; Woodyard method; Problems in antenna design. Basic Antennas and Arrays: Radiation characteristics of wire antennas: Resonant wire antennas (λ , 2λ), Non Resonant (Rhombic) Antenna; Loop antenna; Folded dipole; Yagi-uda antenna; Antenna Arrays-Uniform linear array, Broad side array, End fire array. VHF/UHF antennas: Helical antenna, Parabolic reflector antenna, Horn antenna, Micro strip (patch) antenna, Turnstile and super turnstile antenna, slot antenna. Terrestrial mobile communication antennas: Base station antennas, Mobile station antennas. Smart Antennas. Propagation principles: Friis transmission formula, atmospheric effects, fading, tropospheric scatter, link budget calculation. Ionosphere Layers and Sky wave propagation: Virtual Height, Critical frequency, Maximum usable frequency (MUF), Skip distance, Lowest Usable frequency (LUF), Optimum Usable frequency (OUF) Space Wave propagation: Tropospheric scattered propagation, Duct Propagation. Application: Principles of colour TV transmission and display systems

TEACHING SCHEDULE (1)

1. Antennas:

- a) Electromagnetic fields and radiation theory;
- b) Dipole antenna
- c) Monopole antenna
- d) Thin linear antenna
- e) Loop antenna
- f) Antenna arrays
- g) Horn Antenna
- h) Reflector antennas

ANTENNAS IN A COMMUNICATION SYSTEM

RF Transmitter

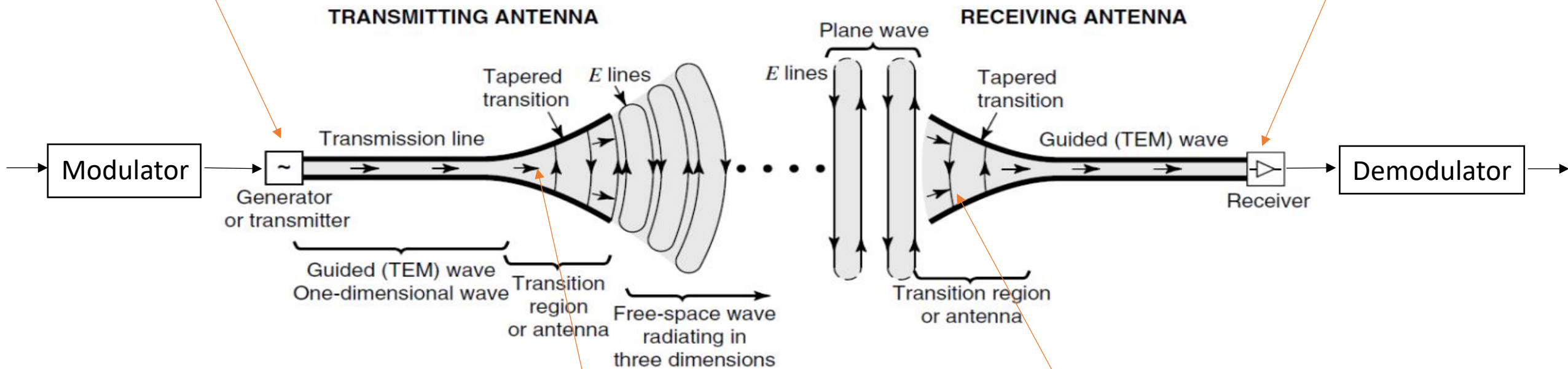
Main parameters are:

- (a) Power
- (b) Frequency.

RF Receiver

Main parameters are:

- (a) Sensitivity
- (b) RF amplifier



Transmitting antenna

- (a) Directivity
- (b) Polarization
- (c) Operating frequency

Receiving antenna

- (a) Directivity
- (b) Polarization
- (c) Operating frequency

TEACHING SCHEDULE (2)

3. Radio Wave Propagation:

- a) Review of guided and unguided wave propagation
- b) Ground/Surface waves
- c) Sky wave propagation and ionospheric effects
- d) Space wave propagation and atmospheric effects
- e) Fading and its effect on communication
- f) Propagation losses in communication links
- g) Scatter propagation.

3. Antenna synthesis:

- a) Fourier transform method
- b) Woodyard method
- c) Other methods

4. Diversity-techniques;

5. Broadcast and point-to-point system design.

6. Problems in antenna design.

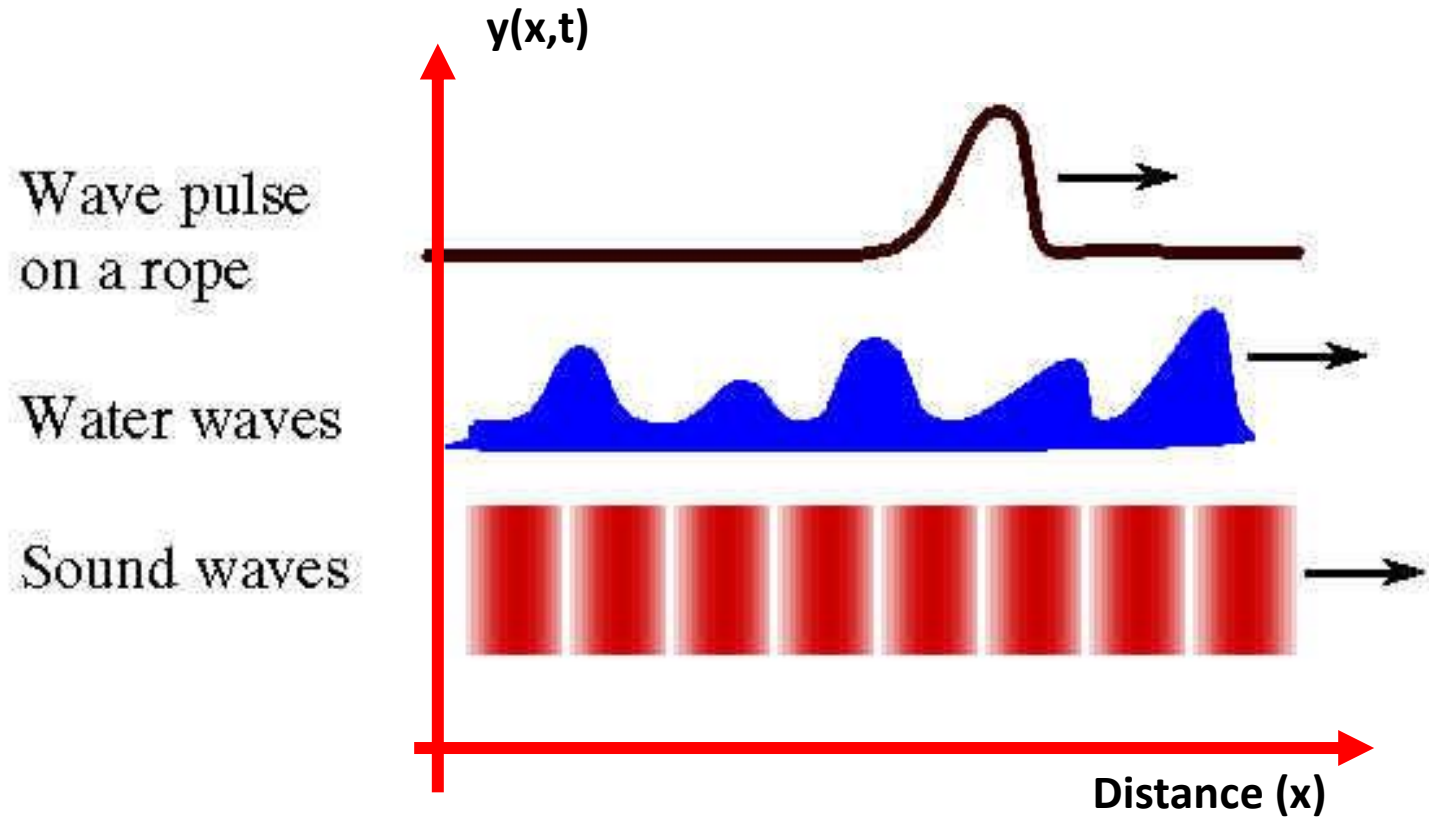
7. Television Engineering

ELECTROMAGNETIC WAVES & RADIATION THEORY

ECE516E – Antenna Engineering and radio Wave Propagation
Monday, 08 September 2025

ASSUMED KNOWLEDGE

1. A wave is a function of both space and time.
2. Wave motion occurs when a disturbance at point A , at time t_0 , is related to what happens at point B , at time $t > t_0$.



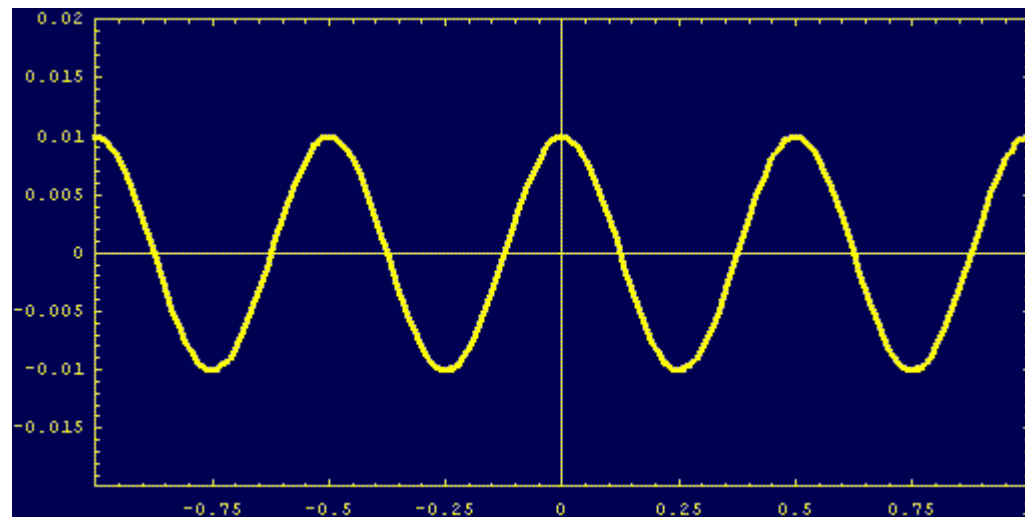
GENERAL ONE-DIMENSIONAL WAVE EQUATION

$$E(z,t) = A \sin(\omega t - \beta z)$$

time Amplitude Phase Constant/Wave number

↓ ↓ ↓

Displacement Angular frequency



ELECTROMAGNETIC SPECTRUM

Very Low Frequency (VLF)

30Hz – 30 KHz

Wavelengths: 10km to 100 km

Audio frequency range

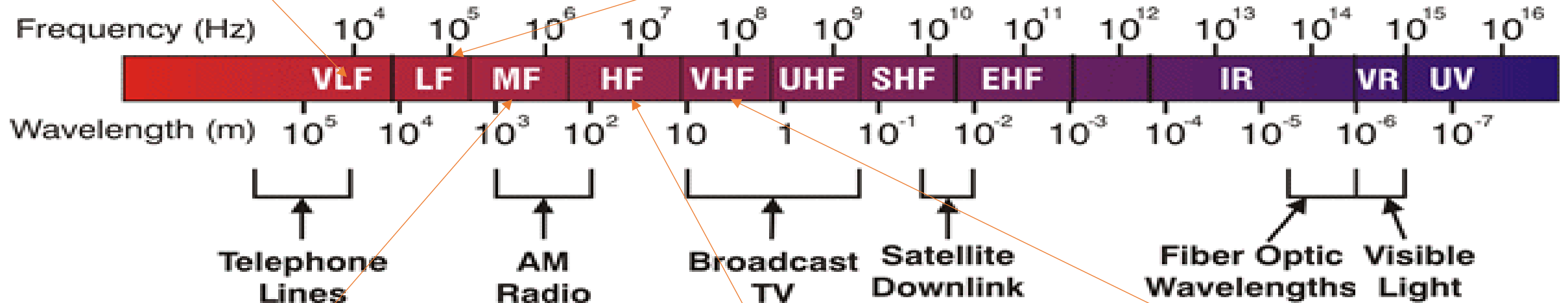
Application: Communication with submarine/SONAR.

Low Frequency (LF)

30KHz – 300 KHz

Wavelengths: 1Km to 10km

Application: AM Radio, Navigation/Weather



MF Frequency (MF)

300KHz – 3 MHz

Wavelengths: 100m to 1000m

Applications: AM Radio

HF Frequency (HF)

3 MHz – 30 MHz

Wavelengths: 10m to 100m

Applications: Shortwave Radio/Citizen Band

VHF Frequency (VHF)

30 MHz – 300 MHz

Wavelengths: 1m to 10m

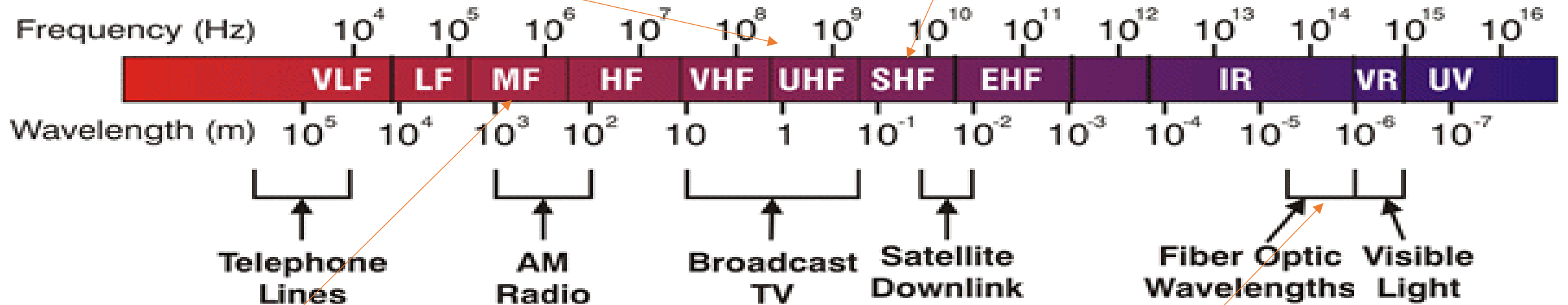
Applications: FM broadcast, Radar, Aviation, Maritime, Citizen band

Ultra High Frequency (UHF)

- 300MHz – 3 GHz
- Wavelengths: 10cm to 100cm
- Audio frequency range
- Application: TV, Aviation, GSM, UMTS, LTE, Low-band 5G, WiFi, Bluetooth, WiMax

Super High Frequency (SHF)

- 3GHz – 30 GHz
- Wavelengths: 1 cm to 10 cm
- Application: Satellite TV, Navigation/Weather



Extremely High Frequency (EHF)

- 30GHz – 300 GHz
- Wavelengths: 10mm to 100mm
- Applications: 5G, Radio astronomy, .

Fibre Optic Communication Band

- Wavelengths: 1260nm – 1675 nm
- Applications: Fibre Optic Communication

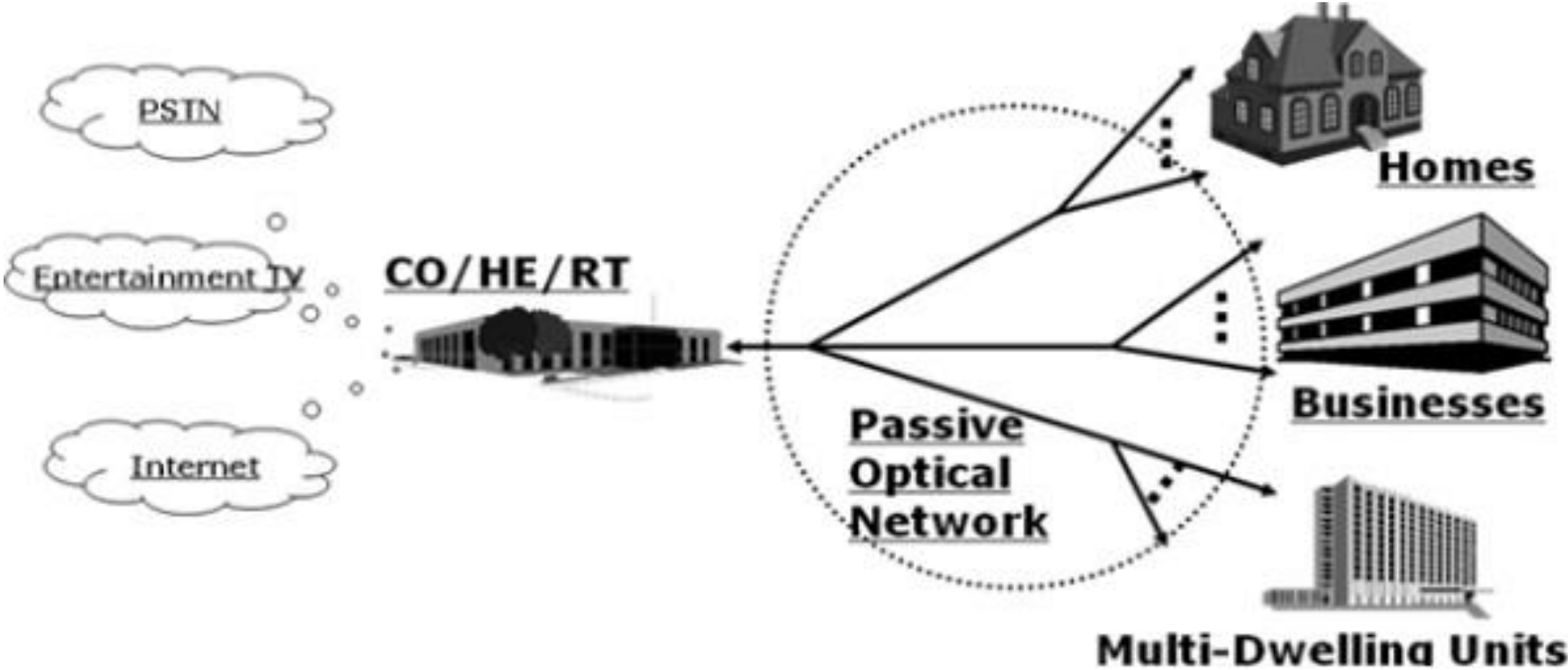
ELECTROMAGNETIC WAVE SPECTRUM

EM PHENOMENA	FREQUENCY RANGE	APPLICATIONS
1. Cosmic Rays	10^{14} GHz and above	Physics and astronomy
2. Gamma Rays	10^{10} - 10^{13} GHz	Cancer Therapy
3. X-rays	10^8 - 10^9 GHz	X-ray examination
4. Ultraviolet Radiation	10^6 - 10^8 GHz	Sterilization
5. Visible Light	10^5 - 10^6 GHz	Human Vision
6. Infrared Radiation	10^3 - 10^4 GHz	Photography in dark or low vision circumstances
7. Microwave Waves	1 - 300 GHz	<ul style="list-style-type: none">• Terrestrial high capacity, Communication links, and• Radar and satellite communication links
8. Radio Waves	0.535 – 806 MHz	<ul style="list-style-type: none">• Television,• FM radio, and• AM radio

BROADCAST RADIO/TV SPECTRUM

APPLICATION	FREQUENCY RANGE
UHF Television	470 – 806 MHz
VHF Television	54 – 216 MHz
FM RADIO	88 – 108 MHz (ITU Region 1)
Shortwave Radio	2 – 26 MHz
AM Radio	535 – 1605 KHz

PASSIVE OPTICAL NETWORKS



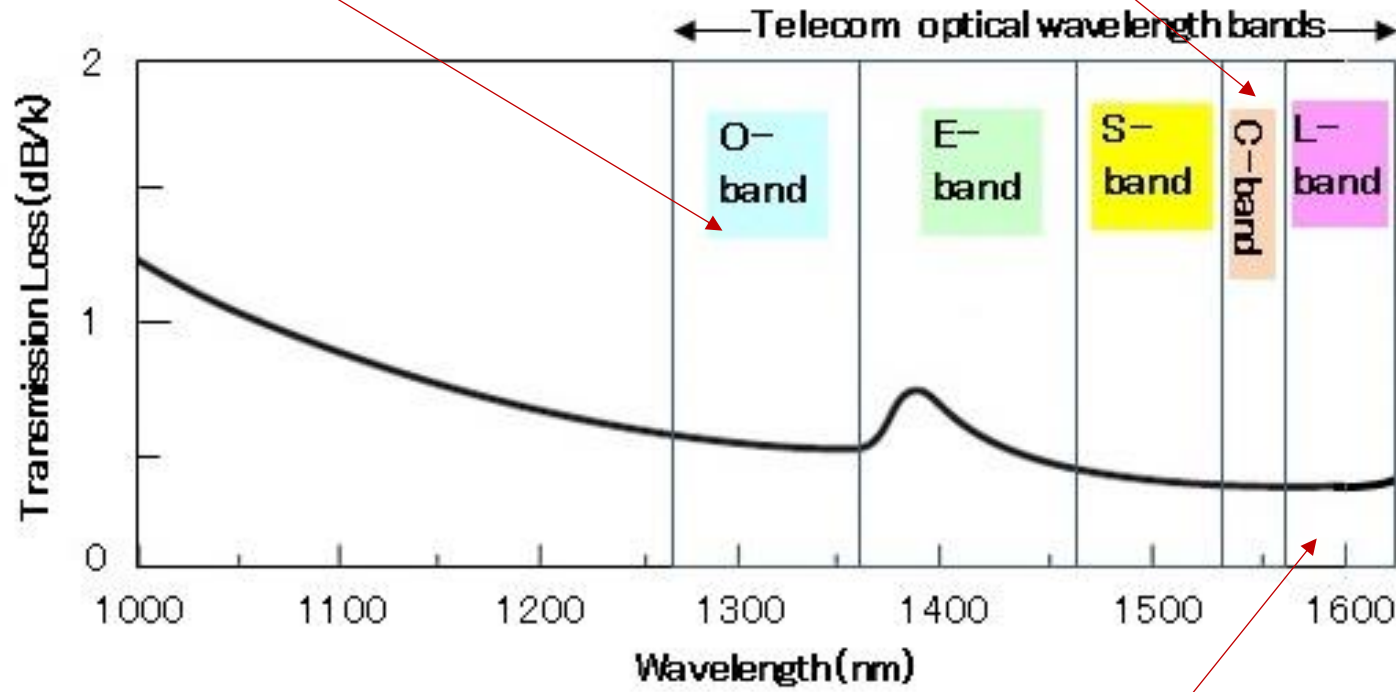
FIBRE-OPTIC COMMUNICATION BANDS

BAND NAME	WAVELENGTH	DESCRIPTION
O-band	1260 – 1360 nm	Original band, Passive Optical Network (PON) upstream
E-band	1360 – 1460 nm	Water peak band
S-band	1460 – 1530 nm	Passive Optical Network (PON) downstream
C-band	1530 – 1565 nm	Lowest attenuation, original DWDM band, compatible with fiber amplifiers, CATV
L-band	1565 – 1625 nm	Low attenuation, expanded Dense Wave Division Multiplexing (DWDM) band
U-band	1625 – 1675 nm	Ultra-long wavelength

FIBRE-OPTIC COMMUNICATION BANDS

O-band (1260-1360 nm) was the first wavelength band used for optical communication, because signal distortion (due to chromatic dispersion) is minimum.

Today, **C-band** shows the lowest fibre loss, and thus is commonly used in, long-haul, ultra-long-haul, and submarine optical transmission systems

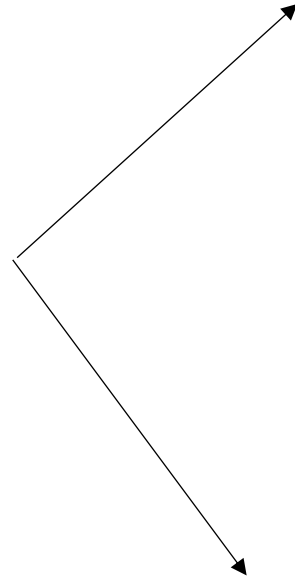


L-band is the second lowest-loss band, and is used for extension when C-band is not sufficient to meet the bandwidth demand.

Further Reading:

<https://www.fiberlabs.com/glossary/optical-communication-band/>

FM SIGNAL TRANSMISSION



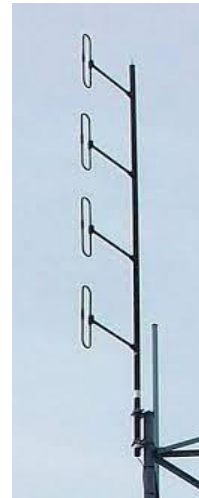
TRADITIONAL TV SIGNAL TRANSMISSION



(a) Outside Broadcasting/TV Studios



(b) High-power (Citizen, KBC, etc)

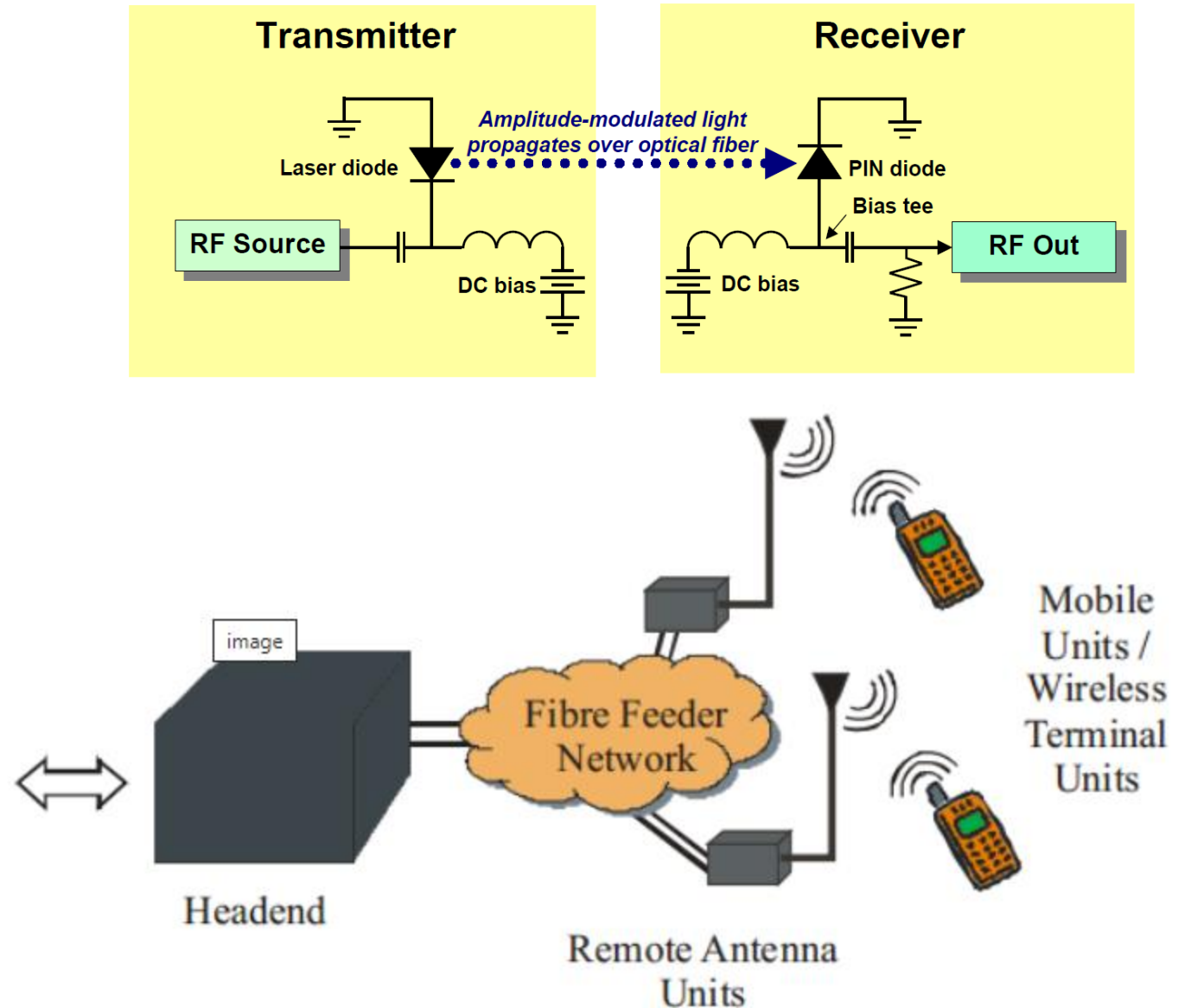


(a) Low-power (Campus/Community)



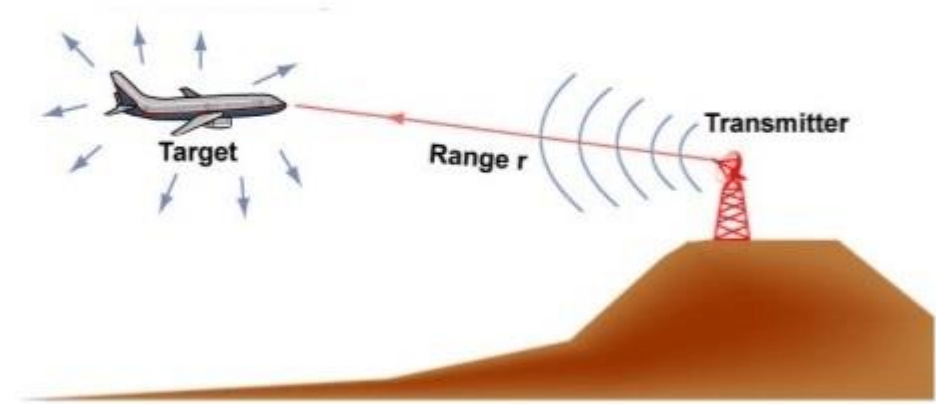
RADIO OVER FIBRE COMMUNICATION

1. **Radio over Fiber (RF over fiber)** refers to an analog transmission over fiber technology whereby light is amplitude modulated by a radio signal and transmitted over an optical fiber link to facilitate wireless access.
2. Although radio transmission over fiber is used for multiple purposes, such as in cable television (CATV) networks and in satellite base stations, the term RoF is usually applied when this is done for wireless mobile access.
3. In RoF systems, wireless signals are transported in optical form between a central station and a set of base stations before being radiated through the air.



RADIO WAVES & RADAR

1. RADAR (**RA**dio **D**etecting **A**nd **R**anging) is a detection system that uses radio waves to determine the distance, angle, and radial velocity of objects relative to the site.
2. RADAR is used to detect aircraft, ships, spacecraft, guided missiles, motor vehicles, weather formations, and terrain.

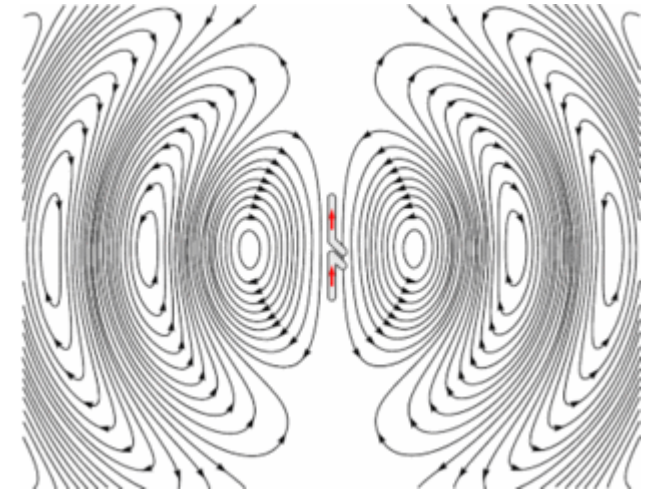


RADAR FREQUENCY BANDS & APPLICATIONS

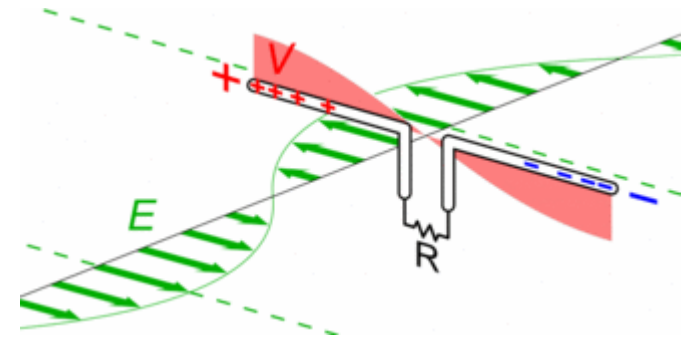
BAND	ORIGIN	RANGE	WAVE LENGTH	APPLICATION
HF	High Frequency'	3-30 MHz	10 – 100M	Coastal radar systems, Over-the-horizon (OTH) radars;
P (VHF)	'P' for 'Previous' (Very High Frequency)	30 – 300MHz	1 – 10M	Applied retrospectively to early radar systems
UHF	Ultra High Frequency	300 – 1,000 MHz	0.3 – 1 M	Very long range (e.g. ballistic missile early warning), Ground penetrating, Foliage penetrating
L	'L' for 'long'	1 – 2.0 GHz	15 – 30 cm	Long-range air traffic control and surveillance
S	'S' for 'short'	2 – 4 GHz	7.5 – 15 cm	Terminal air traffic control, Long-range weather, Marine radar
C	Compromise between X and S bands; Hence C	4 – 8 GHz		Weather radar
X	Frequency was kept secret during World War 2, hence 'X'	8 – 12 GHz	8 – 12 GHz	Missile guidance, Marine radar, Weather, Medium-resolution mapping and ground surveillance.

DEFINITION OF ANTENNA

1. Antenna is a device that provides a means for transmitting and receiving radio waves.
2. Antenna provides a transition from a guided wave in a transmission line to a free space wave and vice versa.



(a) Transmitting antenna



(b) Receiving antenna

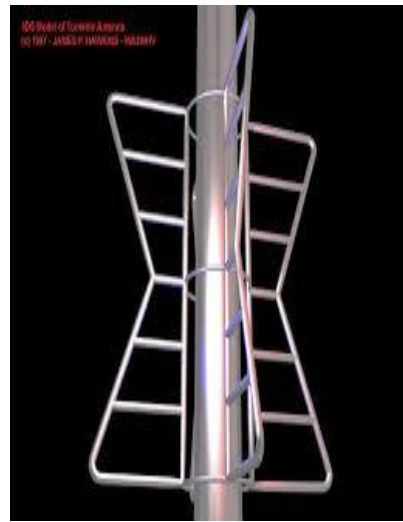
COMMON TYPES OF ANTENNA



(a) Whip Antenna



(b) Half-wave Dipole



(c) Batwing Antenna



(d) Yagi-Uda Antenna



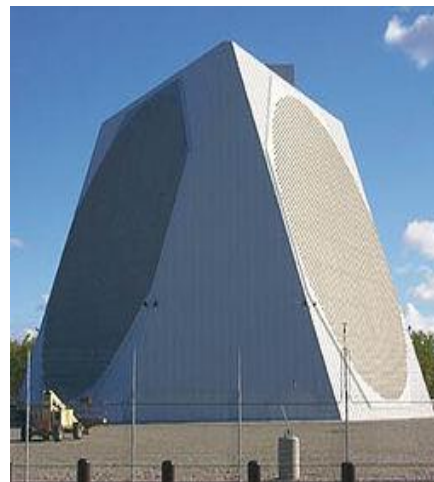
(e) Rabbit Ears Antenna



(f) Parabolic



(g) Corner



(g) Phased Array



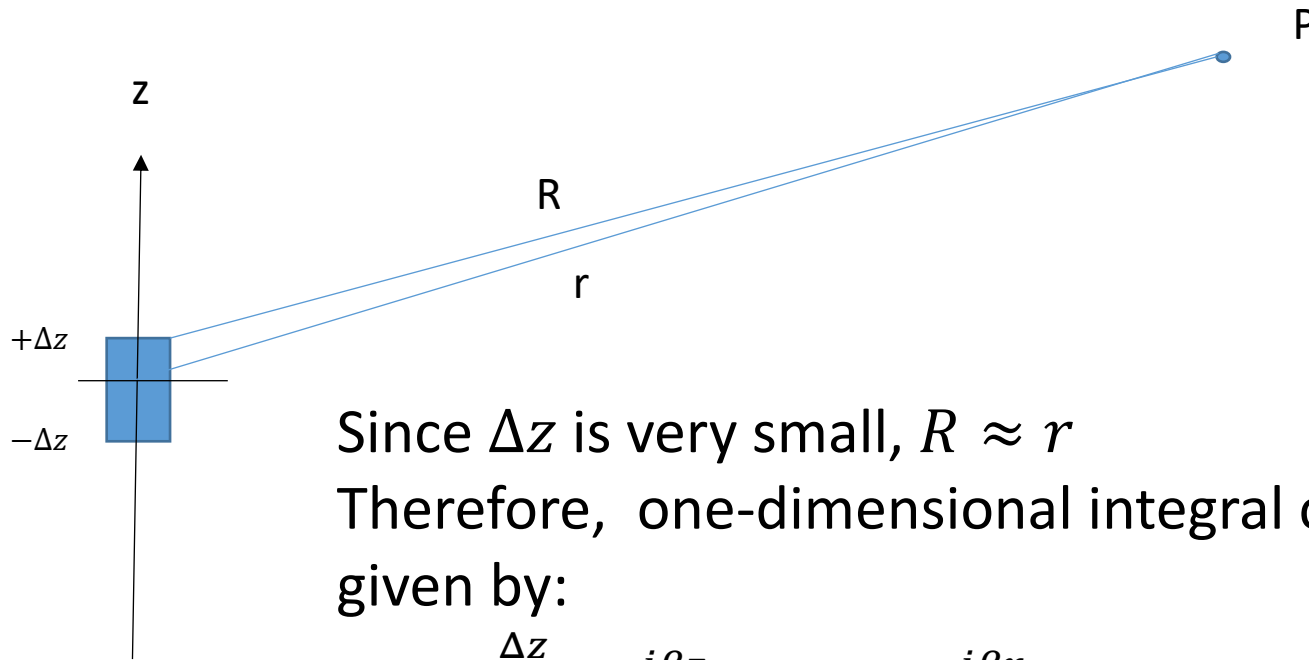
(h) Helical Antenna



(i) nHorn Antenna

IDEAL DIPOLE

- **Ideal dipole** refers to an infinitesimal element of current or uniform amplitude current of very small finite length or $\Delta z \ll \lambda$



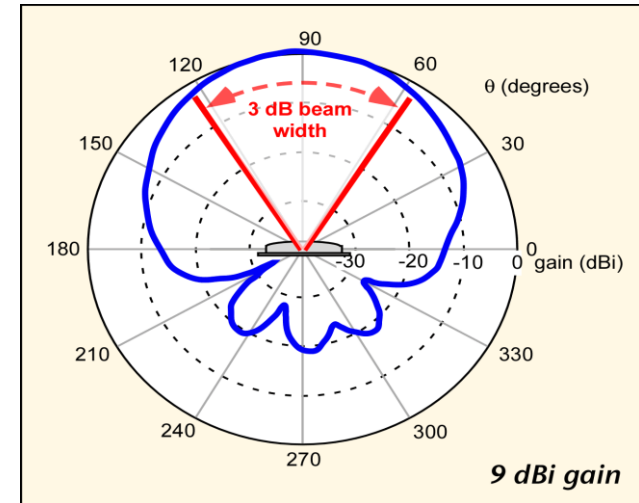
Since Δz is very small, $R \approx r$

Therefore, one-dimensional integral of vector potential at point P is given by:

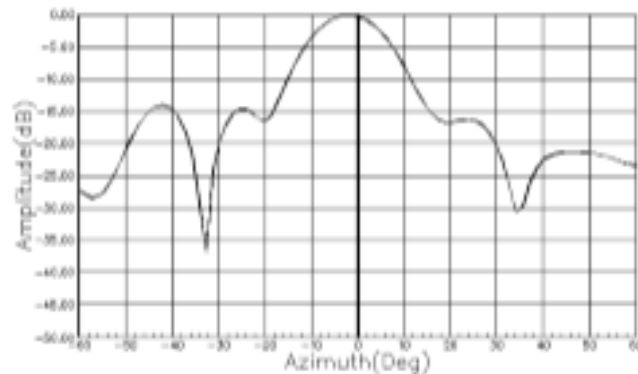
$$A = \int_{-\frac{\Delta z}{2}}^{\frac{\Delta z}{2}} \frac{e^{-j\beta z}}{4\pi r} dz' = \frac{I e^{-j\beta r}}{4\pi r} \Delta z$$

RADIATION PATTERN

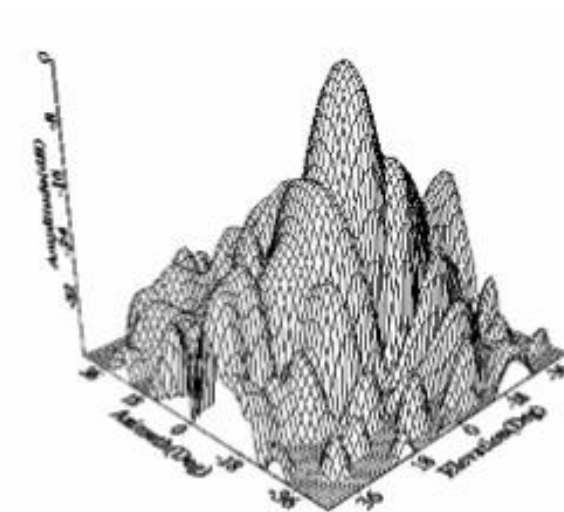
1. **Radiation Pattern** is a graphical representation of the radiation properties of an antenna.
2. **Radiation pattern** is measured by moving a probe antenna round the test antenna.



(a) Radiation Pattern (Polar form)

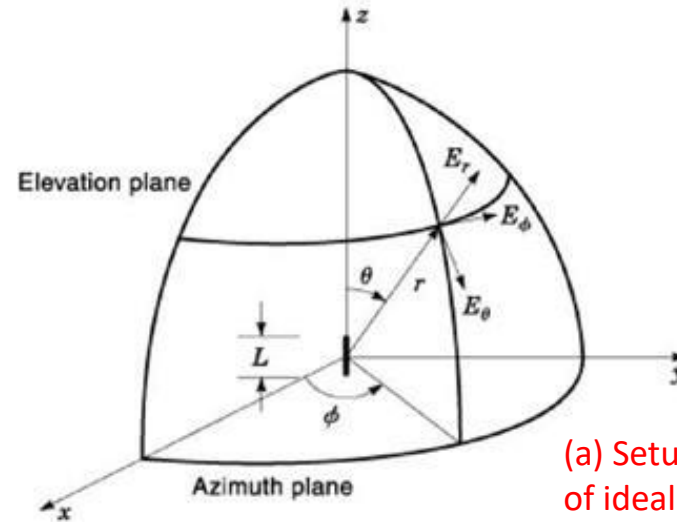


(b) Radiation Pattern (Rectangular form)

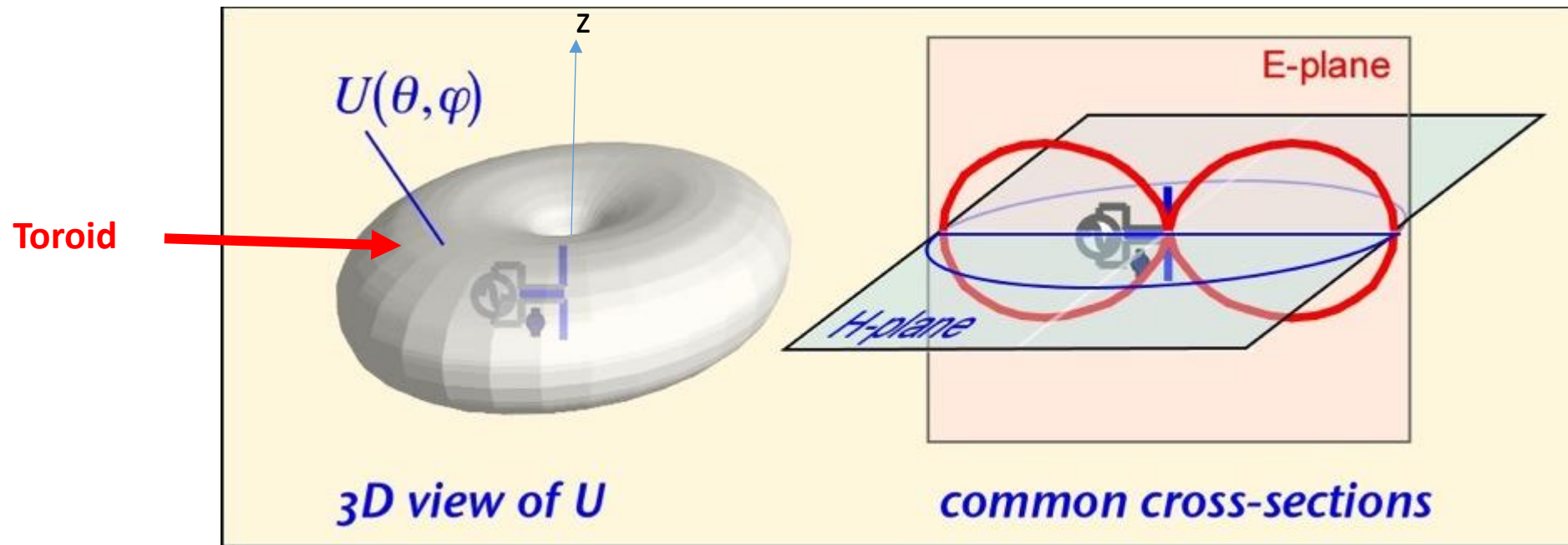


(c) 3D radiation Pattern

RADIATION PATTERN OF IDEAL DIPOLE



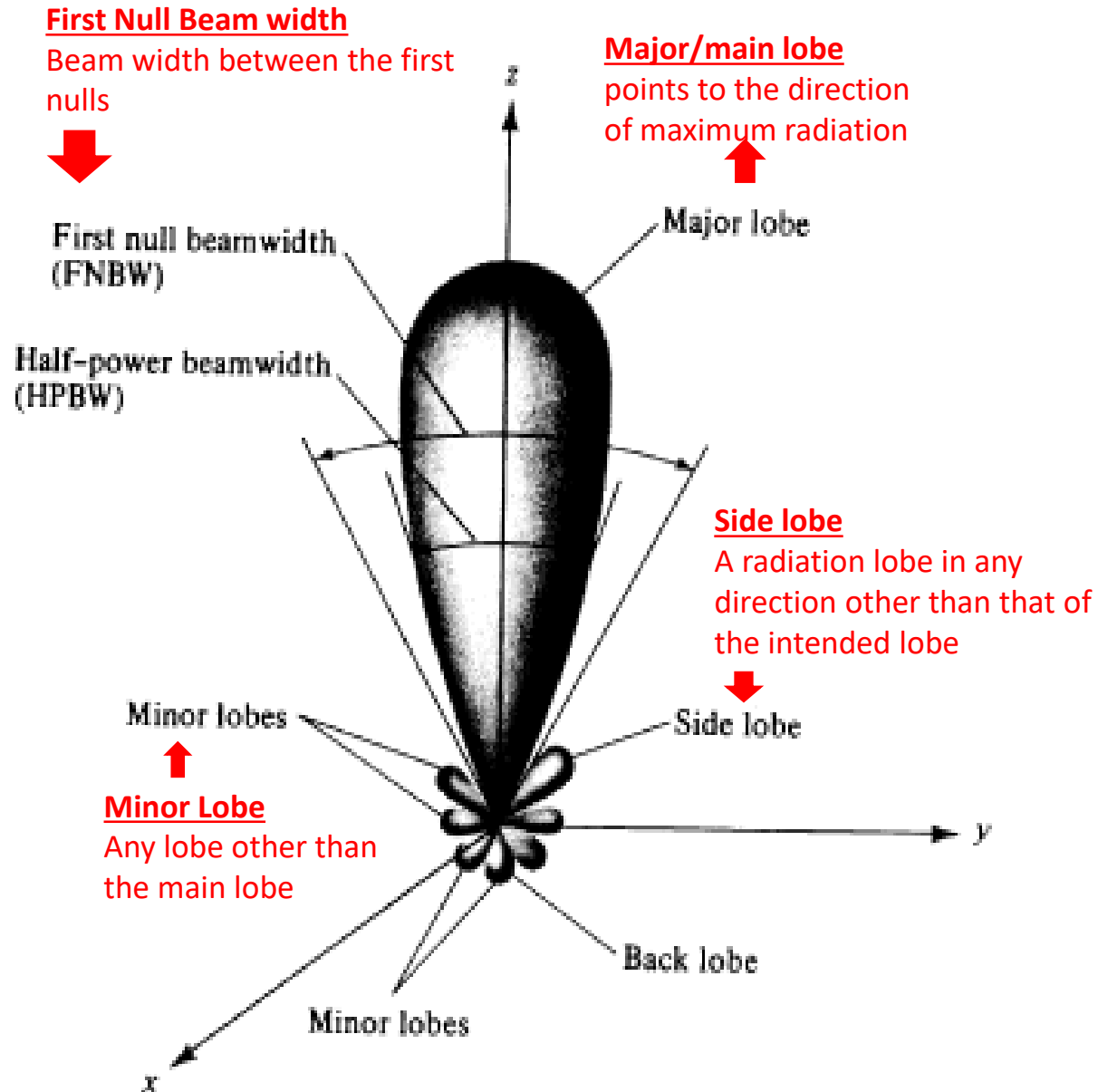
(a) Setup for measuring parameters of ideal dipole



RADIATION PATTERN PARAMETERS

Half-power Bandwidth

Angular separation of points where the maximum main lobe power is reduced to half.



SIDE LOBE LEVEL

- **Side lobe Level (SLL)** is a measure of how power is concentrated in the main lobe.

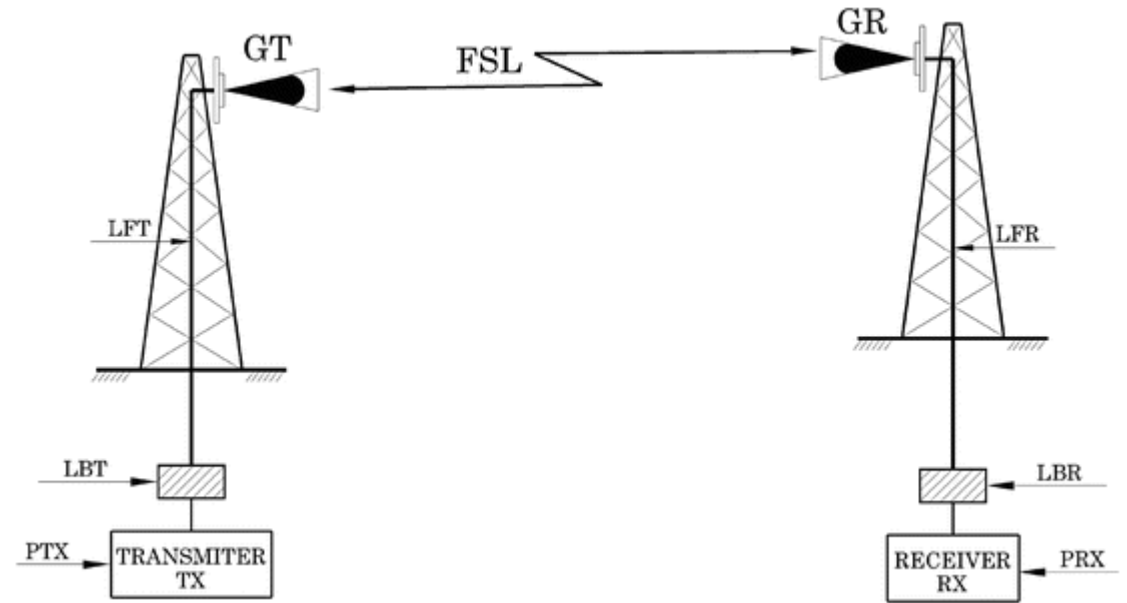
$$SLL_{dB} = 20 \text{Log}_{10} \left(\frac{|F_{SLL}|}{|F_{max}|} \right)$$

Where

F_{SLL} is the maximum value of the highest side lobe, and
 F_{max} is the maximum value of the major (main) lobe

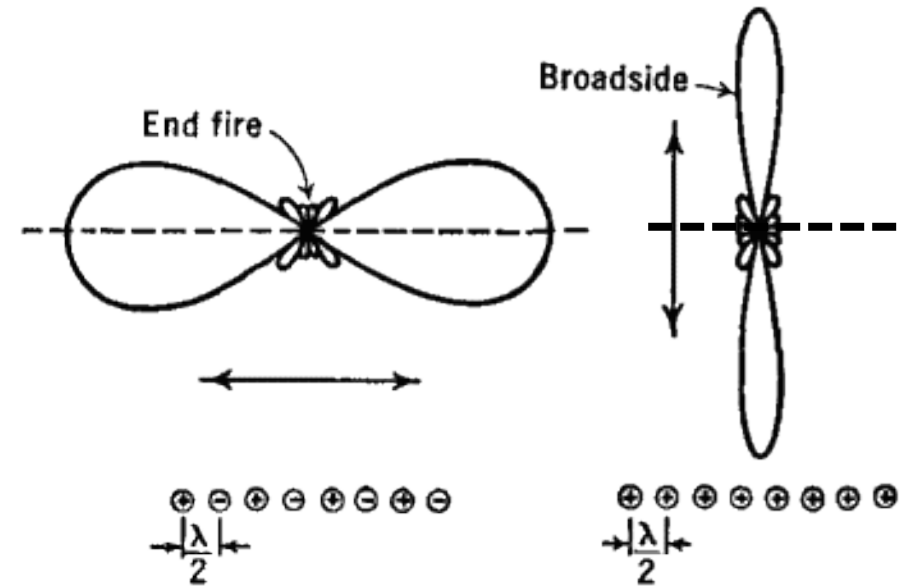
WHY ARE ANTENNA PARAMETERS IMPORTANT?

1. Transmission sites are licensed to conform with the following parameters:
 - a) Location (GPS Coordinates)
 - b) Direction
 - c) Power (Maximum power in Main lobe)
 - d) Front-to-back ratio
2. This ensures that frequencies for line-of-site terrestrial radios are used efficiently and without causing interference.



BROADSIDE /END FIRE ANTENNA

1. A **broadside antenna** has the main beam in the direction normal to the plane containing the antenna.

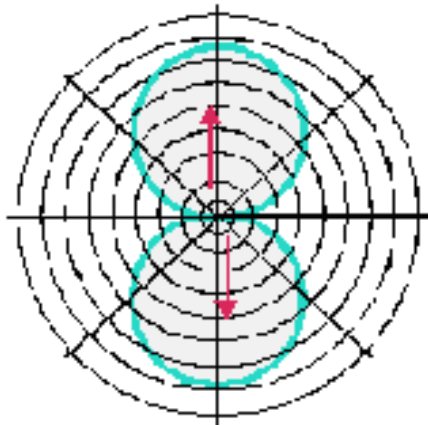


2. **End fire Antenna** has the main beam in a direction parallel to the plane containing the antenna

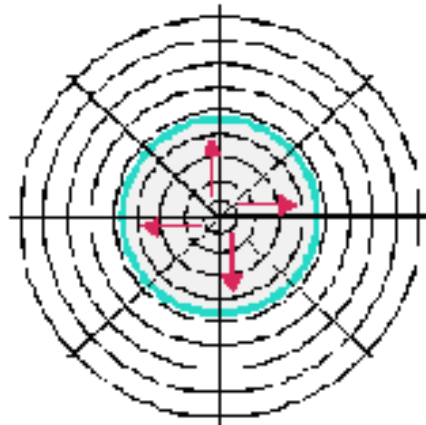
ANTENNA DIRECTIVITY

- **Directivity** is a measure of how an antenna concentrates power in one direction in preference to other directions.

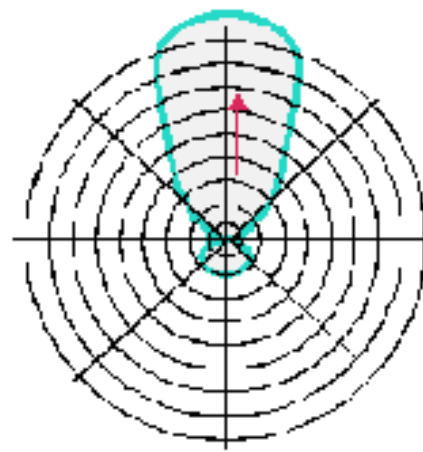
Directivity of typical antennas



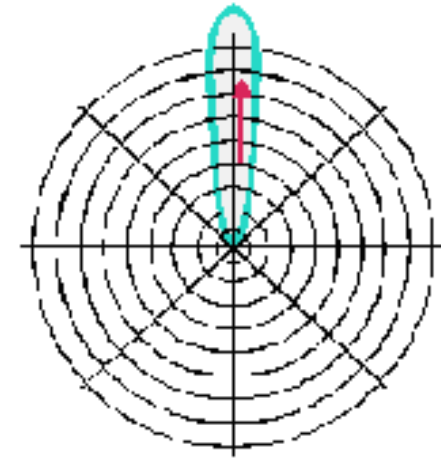
Dipole antenna



Whip antenna



Yagi-Uda array



Parabola antenna

DIRECTIVE GAIN

- **Directive Gain** is the ratio of radiation intensity in a certain direction to the average power intensity.

$$D(\theta, \varphi) = \frac{U(\theta, \varphi)}{U_{ave}}$$

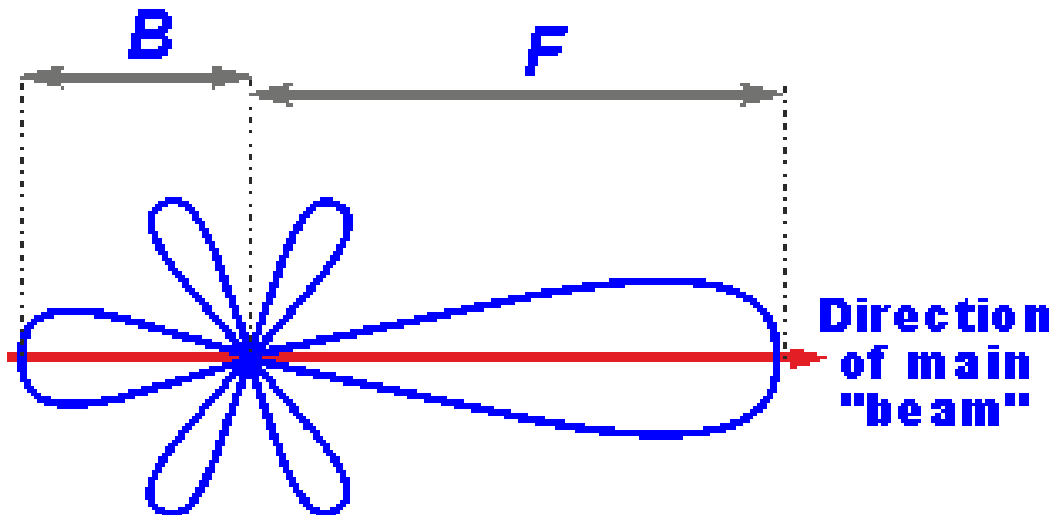
Directivity is the maximum value of Directive Gain over the average, i.e

$$Directivity = \frac{U_m}{U_{ave}}$$

FRONT-BACK (FB) RATIO

- **Front back (FB)** ratio is the ratio of the front lobe to the back lobe, or

$$FB \text{ Ratio} = 20 \log \left(\frac{\text{Main lobe (Max)}}{\text{Back Lobe (Max)}} \right)$$



ANTENNA GAIN

1. **Antenna Gain** is 4π times the ratio of the radiation intensity in a given direction to the net power entering the antenna from the transmitter.

$$G(\theta, \varphi) = 4\pi \frac{U(\theta, \varphi)}{U_{in}}$$

The maximum value of the power gain is:-

$$G = \frac{4\pi U_m}{P_{in}}$$

Where U_m refers to the main lobe

INPUT IMPEDANCE OF ANTENNA

- The input impedance is the antenna impedance at its terminals.
- Input Impedance is affected by other objects near the antenna.

Represents power stored
in the near field of the
antenna



$$Z_{in} = R_{in} + jX_{in}$$



Represents dissipation of
power through heating
(ohmic losses) and
radiation (radiation losses)

OHMIC LOSSES

- The average power dissipated in the antenna is given by:

$$P_{in} = \frac{1}{2} R_{in} |I_{in}|^2$$

- Where I_{in} is the current flowing through the input terminals

$$\begin{aligned} P_{in} &= P_r + P_{Ohmic} \\ &= \frac{1}{2} R_r |I_{in}|^2 + \frac{1}{2} R_{Ohmic} |I_{in}|^2 \end{aligned}$$

- We can therefore define antenna radiation impedance R_r as

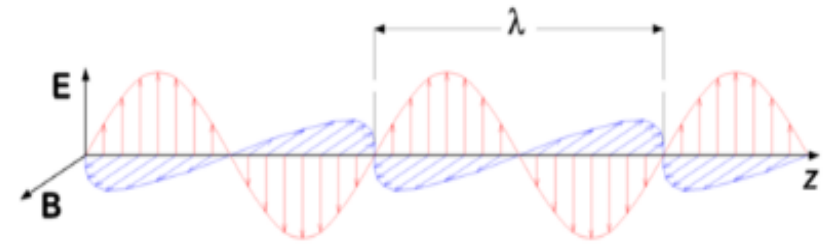
$$R_r = \frac{2P_r}{|I_{in}|^2}$$

- We can also define Ohmic resistance as:

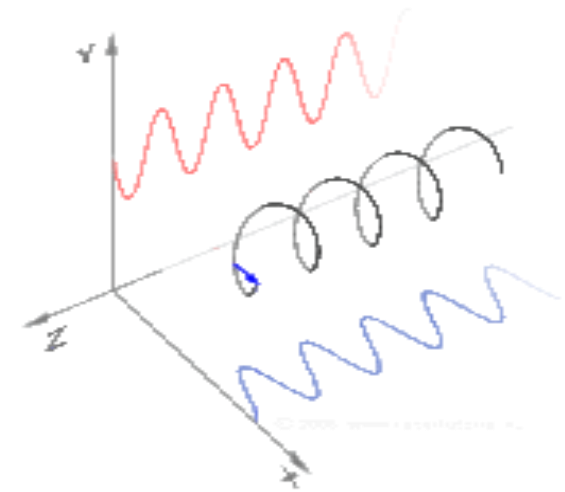
$$R_o = \frac{2(P_{in} - P_r)}{|I_{in}|^2}$$

PLANE POLARIZED WAVE

- **Plane polarized wave** have the electric and the magnetic fields lying in fixed planes.
- **Plane polarized waves** can be linearly polarized or circularly polarized.



(a) Linearly polarized EM wave



(b) Circularly polarized wave as a sum of two linearly polarized waves

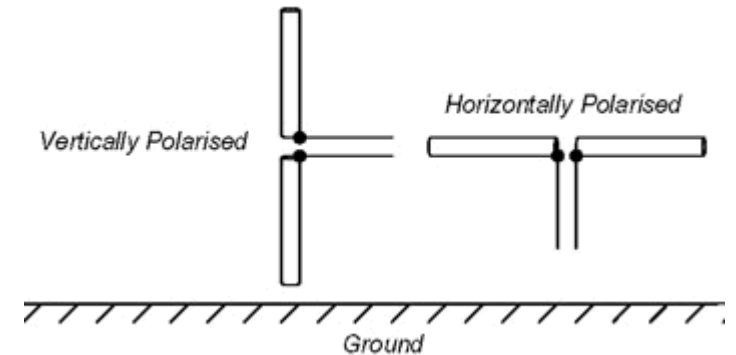
ANTENNA POLARIZATION

1. **Antenna polarization** refers to the orientation of the wave radiated by the antenna in a given direction.
2. An antenna is said to be **vertically polarised (linear)** when its electric field is perpendicular to the Earth's surface.

An example of a vertical antenna is a broadcast tower for AM radio or the "whip" antenna on an auto-mobile.

3. **Horizontally polarised (linear) antennas** have their electric field parallel to the Earth's surface.

An example of horizontal polarisation antenna is the TV aerial.



CIRCULAR POLARISATION

- **Circular polarisation** is most often used in satellite communications.
- Since the polarisation of a linear polarised radio wave may be rotated as the signal passes through any anomalies (such as Faraday rotation) in the ionosphere, circular rotation is desirable in satellite communication.



(a) Circularly polarised helical antenna